

Engineering Design and Structural Performance Evaluation of Rocker Arms in I.C. Engines

Maria Fernanda Lopez¹ & José Antonio Ramirez²

¹Universidad Nacional Autónoma de México, Departamento de Física, Ciudad Universitaria, Coyoacán, 04510, CDMX, Mexico

²Instituto Politécnico Nacional, Centro de Investigación y de Estudios Avanzados (CINVESTAV), Zacatenco, Mexico City, Mexico

ABSTRACT

The component rocker arm is one of the most important parts in valve actuating mechanism of an internal combustion engine. From many years research is going on in the automotive industries considering various factors of optimization like cost, weight, stresses, material compositions, etc. The failure of the rocker arm in valve actuating mechanism is measure concern. To study and analyze stresses generated, we are modelling rocker arm using CATIA CAD software and the various regions of stresses and deformations found out using OPTISTRUCT-RADIOSS structural analysis solver which gives solution for structural optimization using finite element analysis (FEA). In this project, we are using four different materials preferred in industries which are structural steel, aluminium, carbon steel and HMCF (High modulus carbon fibre). So by comparing analytical results and FEA results for all above materials we can study stress level and deformation in rocker arm at extreme load conditions and going to propose best suitable material among above materials on the basis of strength, durability, life and cost of material. The main purpose of this study is to determine the value of stresses in rocker arm at extreme conditions.

KEYWORDS: Rocker arm, Valve actuating mechanism, CATIA, OPTISTRUCT-RADIOSS, FEA.

I. INTRODUCTION

The rocker arm is an important part of the valve train mechanism in fuel injection systems of I.C. engines to satisfy functional requirement opening of inlet and exhaust valves ^[1]. It actuates the valves through a fulcrum using the lifter and the push rod. It also provides a means of multiplying the lift ratio. Recently there has been the advancement in the research of materials used in the construction of rocker arms. Researchers are looking for materials that reduce noise, weight and have higher strength for efficient operation. As of the material requirements of the rocker arm is low weight, a higher strength, low cost, good thermal stability, etc. The most popular materials used for construction of rocker arms are Steel, Aluminium, and forged steel to Stainless steel, alloys and composites ^[10]. If we discuss a functional requirement of the rocker arm is an oscillating lever that conveys radial movement from the cam lobe into linear movement at the poppet valve to open it. One end is raised and lowered by a rotating lobe of the camshaft (either directly or via a tappet (lifter) and pushrod) while the other end acts on the valve stem. When the camshaft lobe raises the outside of the arm, the inside presses down on the valve stem, opening the valve. When the outside of the arm is allowed to return due to the camshaft's revolution, the inside rises, permitting the valve spring to close the valve. The drive cam is driven by the camshaft. This pushes the rocker arm up and down about the turn-on pin or rocker shaft. The friction may reduce at the point of direct contact with the valve stem by a roller cam follower due to roller. A similar arrangement transfers the motion via another roller cam follower to a second rocker arm. It rotates about rocker shaft and transfers the motion via tappet to the poppet valve. In this case, this opens the intake valve to the cylinder head of engine. The failure of rocker arm makes engine useless also requires costly replacement designers are facing a lot of problems especially, stress concentration and effect of loads and forces and other factors. The finite element analysis (FEA) method is the most popular approach and found commonly used for analyzing fracture mechanics problems ^[3].

Figure 1:

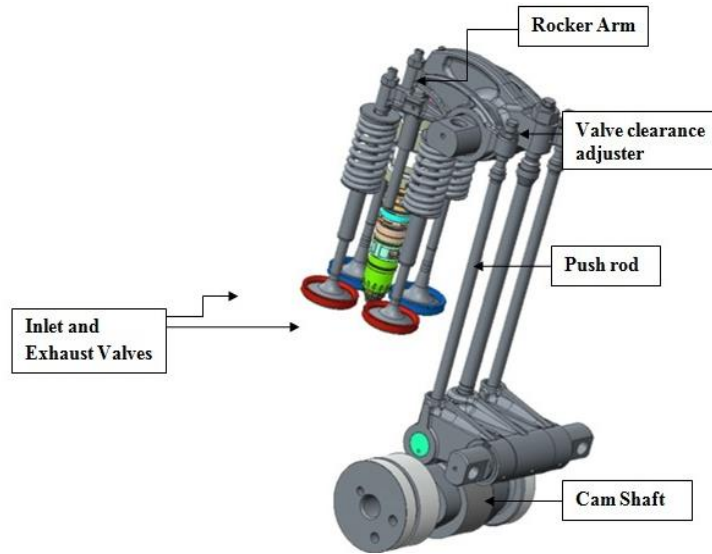


Figure1. Position of Rocker Arm in I.C. Engine

Therefore it needs to carry out a detailed FEA analysis work to study and calculate deformations and stresses in rocker arm to understand the failure modes and to compare various materials on the basis of strength, durability, life, cost, etc

II.OBJECTIVE

The objective is to design rocker arm of aluminium, carbon steel, structural steel, HMCf (High Modulus Carbon Fibre) using CATIA V5 and to carry out the finite element analysis (FEA) on the designed model using OPTISTRUCT 13 static analysis solver. Thus we obtained various values of deformations and stresses by manual calculations and FEA results. This result was then compared to various above materials.

2.1 Problem Description

Due to problems associated with rocker arms like strength, cost and weight, there is needed to consider other alternative materials for rocker arm. Analysis of the material properties is important before they can be implemented.

2.2 Necessity

To avoid rocker arm fatigue failure due to stresses created in rocker body. It is necessary to identify the main contributed stress development in rocker arm and how it can be reduced. This work presents design work analysis of a stress development factors using 3-D CAD models & analysis software in rocker arm by finite element engineering simulation program.

2.3 Objective of Work

- 1) To design rocker arm of steel, aluminium, HMCf (High Modulus Carbon Fibre) using CAD software CATIA V5.
- 2) To carry out the finite element analysis (FEA) on the designed model using OPTISTRUCT-RADIOSS 13.
- 3) FEA analysis is performed according to ASME Code Section VIII, Division 2
- 4) To find the values of deformations and stresses in rocker arm for various materials.

III. MATERIALS AND PROPERTIES

The most common rocker arm materials are steel and aluminium. Clarifying on the material science of rocker arms, Comp Cams explains some interesting facts about steel rocker arms. Chrome-molybdenum

steel, although heavier than other materials, offers some design advantages and has much thinner sections than aluminium and its alloy due to its superior strength density.

Table 1. Material Properties

Material	Aluminium	Carbon Steel	HMCF	Structural Steel
Density (gm/cm ³)	2.7	7.85	1.6	7.85
Young's Modulus (GPa)	70	200	175	200
Ultimate strength (MPa)	310	585	1000	460
Yield Strength (MPa)	276	415	110	250
Poisson's Ratio	0.35	0.285	0.3	0.3

IV. METHODOLOGY

1. Analytical Design calculations of the rocker arm.
2. Creating of 3-D Model by using any Modelling (CAD) Software.
3. Finite Element Analysis (FEA).
4. Comparison of Analytical results and FEA results.

V. ENGINE SPECIFICATIONS

Table 2 Engine specifications

Type of Vehicle	Turbocharged, 6-cylinder, Diesel Engine, 2523 CCm2DiCR Engine
No. Of Cylinders	6-cylinder V configuration
Capacity	2523 cc
Max. Engine Power	46.3 kW @ 3200 rpm
Max. Torque	195 NM @ 1440-2200 rpm

VI. DESIGN AND CALCULATIONS

Table 3: Inputs to analytical calculations

Design Variables And Inputs		
Inner dia. of the fulcrum (d1)	22	mm
Bush thickness	2	mm
Mass of valve (M _v)	0.09	Kg
sheet thickness (t)	3.5	mm
Diameter of the valve head (D _v)	40	mm
valve lift (h)	9.4	mm
rpm of engine	3200	RPM
cylinder pressure (P _c)	0.4	N/mm ²
maximum suction pressure (P _s)	0.02	N/mm ²
diameter of boss (D _i)	34	mm
length of valve side arm (L _v)	41	mm
Rocker arm ratio	1.64	
angle action of cam (Ø)	110	deg.
height of push rod contact to bush center (h ₂)	10	mm
height of valve contact to bush center (h ₁)	3	mm
Spring Rate (K)	23	N/mm
Spring Preload (P ₁)	249.5	N

1. Total load on the valve

$$P_t = P_g + w$$

$$P_t = 503.53 \text{ N}$$

2. Initial Spring Force, (F_s)

$$F_s = \frac{\pi}{4} \times d_v^2 \times P_s - w$$

$$F_s = 24.249 \text{ N}$$

3. Force due to the acceleration of valve

$$\text{The speed of camshaft (Ns)} = \frac{N}{2} = 1600 \text{ rpm}$$

And angle turned by the camshaft per second

$$= \left(\frac{1600}{60} \right) \times 360 = 9600 \text{ deg/s}$$

Therefore time is taken for the valve to open and close

$$t = \frac{\text{Angle of action of cam}}{\text{Angle turned by camshaft}}$$

$$= 0.01145 \text{ sec}$$

We know that maximum acceleration of the valve

$$a = \omega^2 \times r = \left(\frac{2\pi}{t}\right)^2 \times r$$

$$= 1550.00 \text{ m/s}^2$$

Therefore force due to valve acceleration, considering the weight of the valve,

$$F_a = m \times a + w$$

$$F_a = 140.38 \text{ N}$$

4. maximum load on the rocker arm for exhaust valve,

$$F_e = P + F_s + F_a + (P_1 + K \times h)$$

$$F_e = 1133.87 \text{ N}$$

Load on push rod side arm (F_c)

$$F_c = F_e \times \text{Rocker arm ratio}$$

$$F_c = 1859.54 \text{ N}$$

6.1 Calculations for Bending Stress of Cross Section

The Rocker arm may be treated as a simple supported beam and loaded at the fulcrum point. Therefore, due to the load on the valve the rocker arm is subjected to bending moment.

We know that maximum bending moment (M) of cross-section,

$$M = F_e \times \left(l - \frac{D_1}{2}\right) \quad M = 27212.89 \text{ N-mm}$$

The rocker arm is of C-section, Section modulus (Z),

$$Z = \frac{I}{b - C_x}$$

$$I = \frac{2ab^3 + (c-2a)a^3}{(3 - AC_x^2)}$$

Where,

$$A = 2ab + a(c-2a)$$

$$= 203 \text{ mm}^2$$

$$C_x = \frac{2ab^2 + a^2(c-a)}{4ab + 2a(c-2a)}$$

$$= 7.4396 \text{ mm}$$

Therefore,

$$I = \frac{2 \times 3.5 \times 20^3 + (25 - 2 \times 3.5)3.5^3}{(3 - 203 \times 7.4396^2)}$$

$$= 7688.176 \text{ mm}^4$$

We know that, Section modulus is

$$Z = \frac{I}{b - C_x}$$

$$Z = 612.0992 \text{ N-mm}^3$$

Bending stress,

$$\sigma_b = \frac{M}{Z}$$

$$\sigma_b = 44.458 \text{ N/mm}^2$$

VII. Modeling in CATIA

The rocker body was a forged body entity. The model was created in CATIA CAD software.

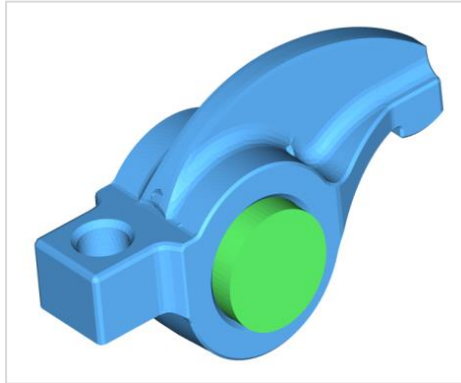


Figure 3: 3D Model of Rocker Arm

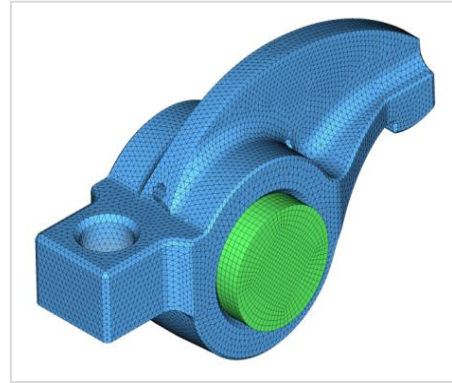


Figure 4: Mesh Model

For analysis, a model was meshed using tetrahedron elements for rocker arm and hex elements for rocker shaft. The number of Nodes used in this meshing is 48261 and elements are 141408. Considering the practical application of rocker arm, we are constrained all degrees of freedom of rocker shaft. Force applied at push rod side is **1860 N** and valve end side **1134N**.

Rocker Arm 1: Aluminium

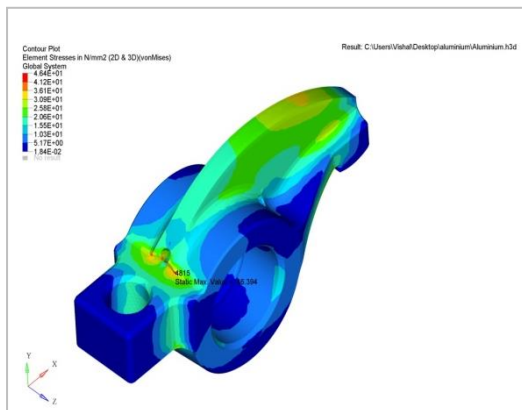


Figure 6: Equivalent (Von-Mises) Stress Plot

Rocker Arm 2: Carbon Steel

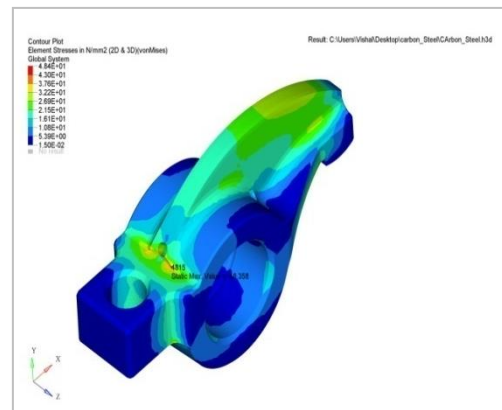


Figure 7: Equivalent (Von-Mises) Stress Plot

Rocker Arm 3: Structural Steel

Rocker Arm 4: HMCF UD

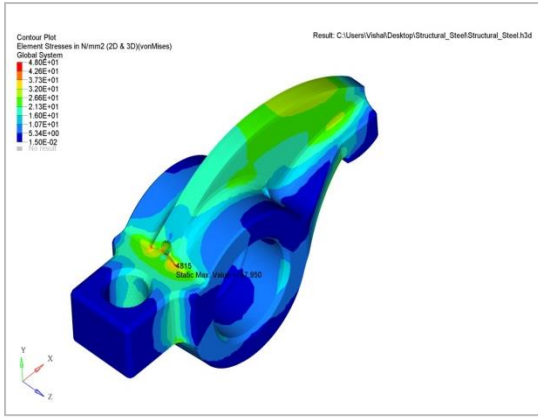


Figure 12: Equivalent (Von-Mises) Stress Plot

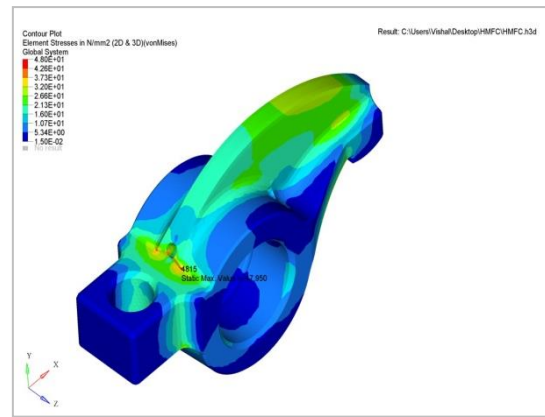


Figure 13: Equivalent (Von-Mises) Stress Plot

VIII. RESULTS AND DISCUSSION

Numerically, by using mathematical formulae we calculated the stress level and shear stress at fulcrum pin in the rocker arm. The mathematical results are then compared or validated with FEA analysis results.

9.1 Numerical Results

Bending stress in all rocker arm is calculated analytically by using mathematical formulae results are as follows,

Maximum Bending stress (σ_b) = **44.458 MPa**

Maximum Shear Stress (τ_{max}) = **29.459 MPa**

9.2 Finite Element Analysis Results:

Material Used	Stress (MPa)	Shear Stress (MPa)	Deformation (mm)
Aluminium	46.394	24.389	0.0842
Carbon Steel	48.358	25.113	0.0150
Structural Steel	47.95	24.964	0.0140
HMCf UD	47.95	24.964	0.0170

Table 3: Finite Element Analysis Results

IX. CONCLUSION

Study and analysis of bending stresses, shear stresses and deformations level in rocker arm body are carried out as per the ASME section code and it can be concluded that Finite Element analysis is required to match the results of analytical calculations. This study is not exhaustive and conducted by Finite Element analysis of a Rocker Arm using 3D modelling and post-processing for analysis of rocker arm with rocker shaft according to ASME codes.

Stresses within a rocker arm body with rocker shaft on its periphery are investigated we can conclude that stress at the fulcrum pin and drain hole is maximum. Due to fatigue rocker may fail near fulcrum pin at push rod side.

2. Shear stress is maximum at the fulcrum pin, in the case of shear also there may chance of failure of the rocker body at fulcrum pin due cyclic load or fatigue. Thus we conclude that fulcrum of rocker arm is at maximum shear stress. Value of maximum deformation shows a valve end of rocker body that is negligible in value.

3. By analyzing obtained values of stresses, shear stresses and deformations weak areas are identified early in the product development process, allowing some design changes. Alternately, the design can be further optimized by reducing the amount of material used.

4. Stresses within the rocker body are calculated by using FEA and validated with the help of result obtained by using analytical mathematical formulae.

X. REFERENCES

- [1] Husain S.M., Prof. Siraj Sheikh, “Rocker Arm: A Review”. International Journal of Innovative Research in Science, Engineering and Technology Vol. 02, No.4, pp. 1120-1126, 2013
- [2] Jafar Sharief, K.Durga Sushmitha, “Design and Analysis of a Rocker Arm” International Journal of Computational Engineering Research (IJCER) Vol. 05, No. 09, September – 2015.
- [3] Husain S.M., Prof. Siraj Sheikh, (2013). “Design and Analysis of Rocker Arm” International Journal of Mechanical Engineering and Robotics Research (IJMERR). Vol.02, No-03, pp.191-197, 2013.
- [4] Tawanda Mushiri, Charles Mbohwa, “Finite Element Analysis of a Car Rocker Arm” International Conference on Operations Excellence and Service Engineering, Orlando, Florida, USA, September 10-11, 2015, pp. 687-694, 2015.
- [5] Anush Karki1, Anupam Raj Jha and Rabindra Nath Barman, “Design and Analysis of Rocker Arm by Finite Element Method using ANSYS”. International Journal of Advanced Research in Biology, Engineering, Science and Technology (IJARBEST) Vol. 02, No. 04, pp.1-6, 2016.
- [6] Jim Miller, “Rocker Geometry” Engine Professionals Apr-Jun 2010, pp. 20-30, 2010.
- [7] Mohd. Moesli Muhammad1, M. C. Isa, Syed Rosli S.B. “Failure Analysis of a Diesel Engine Rocker Arm”. Maritime Technology Division (BTM), Mechanical & Aerospace Technology Division (BTJA), Science & Technology Research Institute for Defence (STRIDE), Ministry of Defence, Malaysia.
- [8] G.A. Nassef, A. Elkhatab, Mostafa Yakout, “Analysis of a failed rocker arm shaft of a passenger car Engine” Department of Production Engineering, Alexandria University, Egypt and Department of Mechanical Engineering, McMaster University, Hamilton, Canada. Case Study in Engineering Failure Analysis (ELSEVIER), Vol.05, No.06, pp. 10–14, 2016.
- [9] Salah E. Mohammed, M. B. Baharom and A. Rashid A. Aziz, “The Effect of Rocker Ratio and Connecting Rod Length on the Performance of a Crank-Rocker Mechanism with an Extended Rocker Input Link”. ARPN Journal of Engineering and Applied Sciences Vol. 11, No. 06, pp. 4221-4229, 2016.
- [10] A.Nagaraja, Asst. Prof. G. Suresh Babu, “Design and Optimization of Four Wheeler Rocker Arm for Neck and Hole” International Journal & Magazine of Engineering, Technology, Management and Research Vol.02, No: 07, July 2015.
- [11] F.M. Gunkan, B. Dogru, C. Baykara, O.A. Kutlar and H. Arslan, “Design and Dynamic Analysis of a Novel Valve Control Mechanism” Department of Mechanical Engineering, Istanbul Technical University, Gumussuyu, Istanbul, Turkey citation number in square brackets, for example [2-4], [2, 5], and [1], 2013.